

HONEYVILLE

Support Towers

Models

4624T4

4646T4

Dealer Name: _____

Dealer Order #: _____

Project Name: _____

Honeyville Order #: _____

Tower Model: _____

Tower Height (ft): _____

Honeyville Metal, Inc.

4200 S 900 W

Topeka, IN 46571

Phone: (260) 593-2266

Fax: (260) 593-2486

www.HoneyvilleMetal.com

Honeyville Support Towers

This page has been intentionally left blank

Table of Contents

INTRODUCTION	3
PARTS LIST	5
ASSEMBLY	7
Step 1	7
Step 2	8
Step 3	9
Step 4	10
Step 5	10
INSTALLATION	11
Lifting	11
Anchoring: 4624T4	11
Anchoring: 4646T4	12
WARRANTY	13
CERTIFICATE OF QUALITY	14

This page has been intentionally left blank

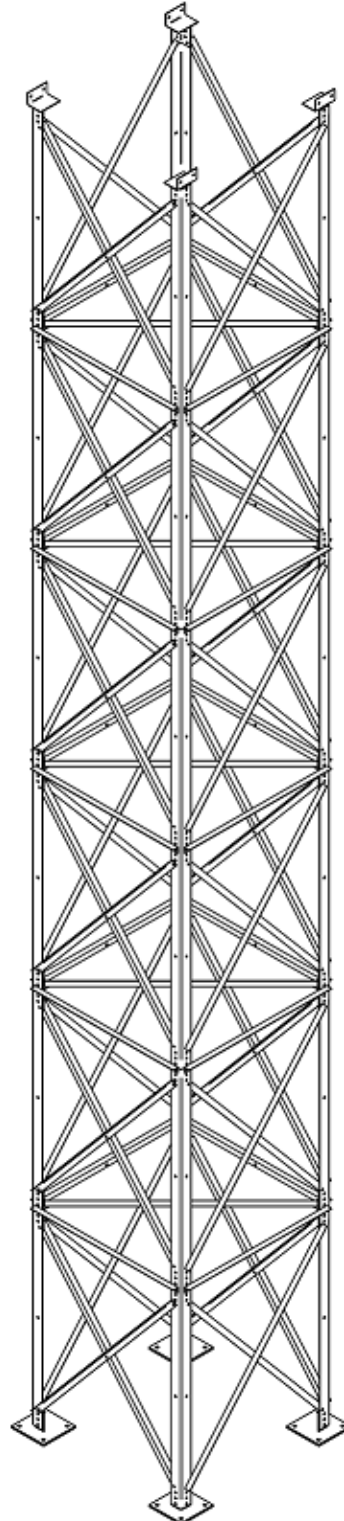
INTRODUCTION

Thank you for purchasing a Honeyville Support Tower. The word "tower" is being used as a generic term for support structures of this type across the grain handling industry.

This tower is designed to provide a weight support leg from a concrete foundation on the ground up to a point overhead where a live load is present. This can include any of the following:

- Conveyors
- Conveyor Supports
- Manwalks
- Distributors
- Other mechanical devices

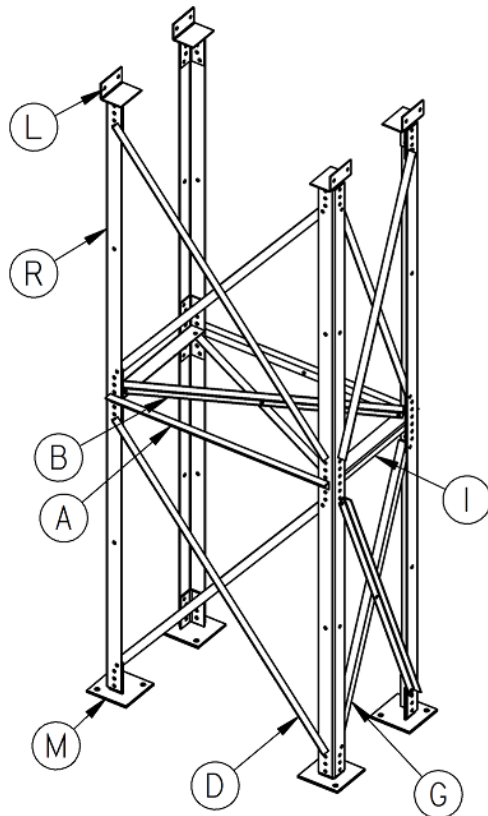
Honeyville Support Towers are designed to carry live loads of up to 18,000 lbs. and withstand up to 110 MPH winds with the condition that the components being supported by the tower apply the live load onto the tower and/or are located at the top of the tower also withstand the equal wind loading conditions.



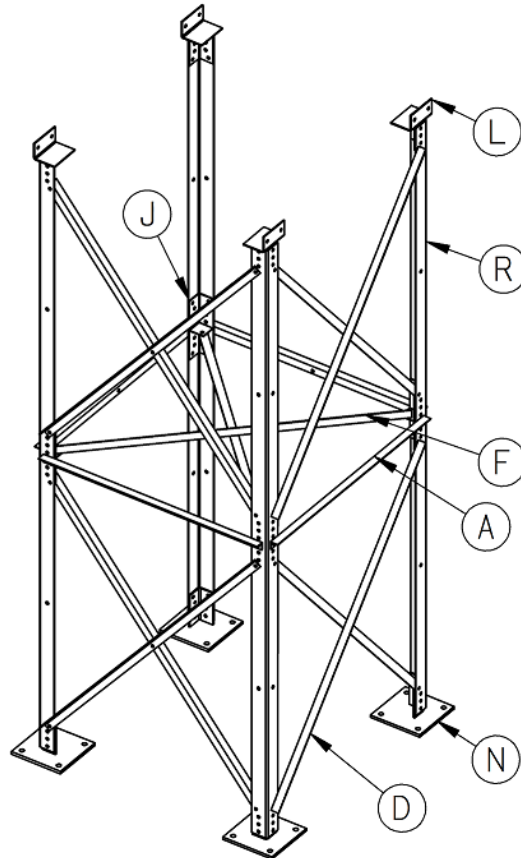
This page has been intentionally left blank

PARTS LIST

MODEL
4624T4



MODEL
4646T4



Item	Part No.	Description	Size
A	CWAS-4624	1 1/2" x 1 1/2" x 1/8" Galv Angle	44 1/2"
B	CWBS-4624	1 1/2" x 1 1/2" x 1/8" Galv Angle	47 1/2"
D	CWDS-4624	1 1/2" x 1 1/2" x 1/8" Galv Angle	66 1/2"
F	TWFS-4646	1 1/2" x 1 1/2" x 1/8" Galv Angle	60 5/16"
G	TWGS-4624	1 1/2" x 1 1/2" x 1/8" Galv Angle	55"
I	CWIW-4624	12" x 24" Connector	
J	TWJW-4646	12" Connector	
L	TWLW-4600	Saddle	
M	TWMW-4624	8" x 8" x 3/8" Foot Plate	
N	TWNW-4646	10" x 10" x 1/2" Foot Plate	
R	CWRT-4624120	3" x 3" Main Rail	119 15/16"
	HWMB508008	1/2"-13 x 1" Hex Grade 5 Machine Bolt	
	HWWN1008	1/2"-13 Whiz Nut	

This page has been intentionally left blank

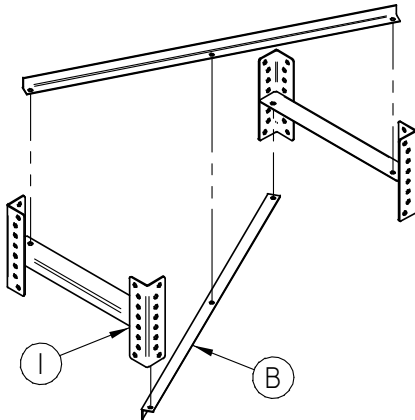
ASSEMBLY

NOTE: Nuts should only be made finger tight until instructed otherwise.

STEP 1

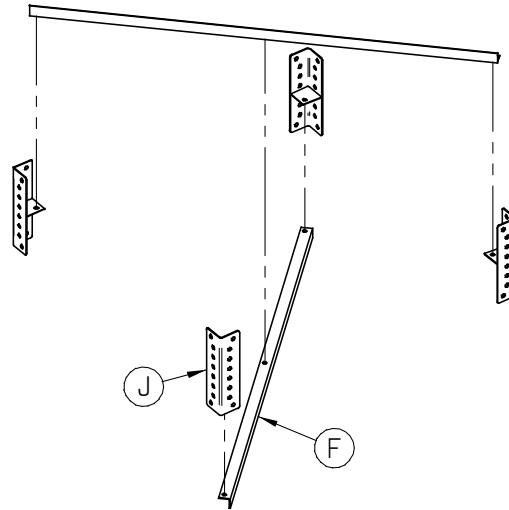
Model 4624T4

- Position "I" connectors so they face the same direction.
- Bolt "B" to "I"
- Bolt "B" together through center holes

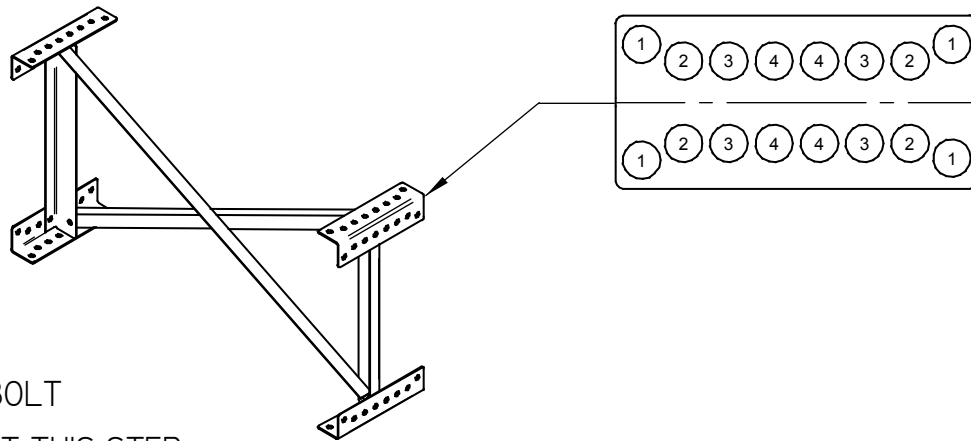


Model 4646T4

- Bolt "B" to "J"
- Bolt "B" together through center holes



Explanation of Hole Naming:



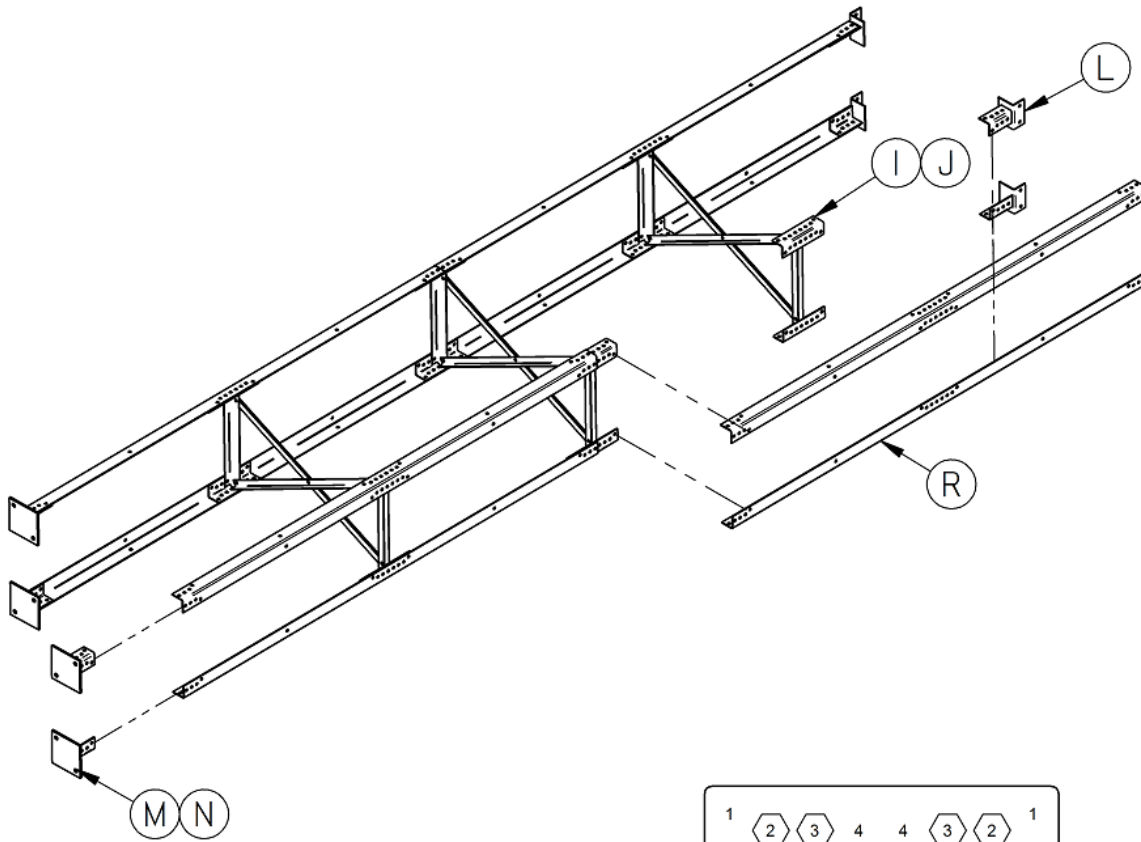
3 NO BOLT

3 BOLT THIS STEP

3 BOLTED

STEP 2

- Bolt "R" to "I" or "J" through holes 2 and 3.
 - Note: All "I" connectors should face the same direction.
- At the bottom of the tower, bolt "M" or "N" to "R".
- At the top of the tower, bolt "L" to "R".
- Bolt through all remaining holes 2 and 3.

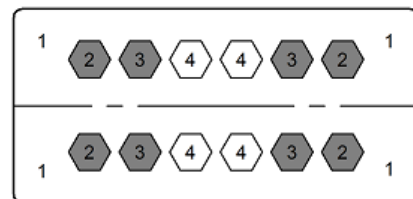
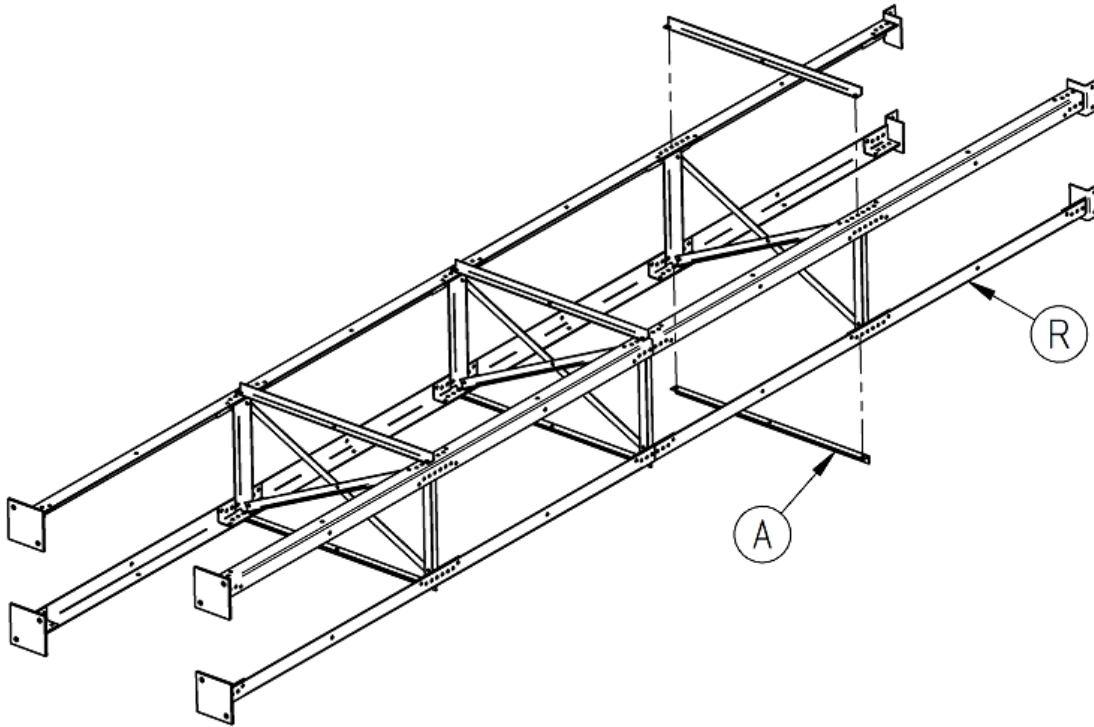


1	2	3	4	4	3	2	1

1	2	3	4	4	3	2	1

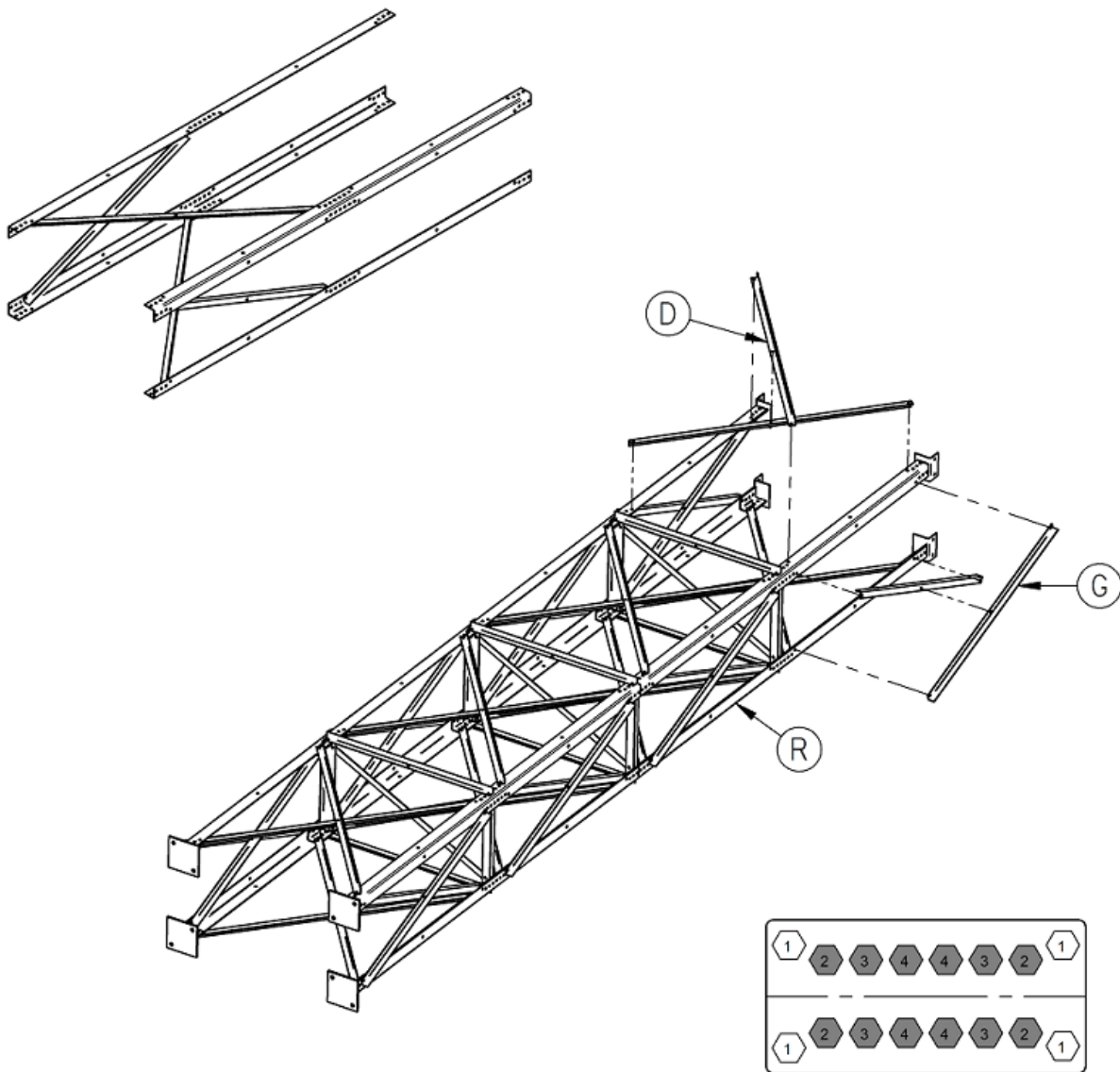
STEP 3

- Bolt "A" to "R" through hole 4.
- Bolt through all remaining holes 4.



STEP 4

- Bolt "D" and "G" to "R" through hole 1.
- Start with inside angles as shown.
- Bolt through all remaining holes 1.



STEP 5

- Square up the tower.
- Tighten all bolts.

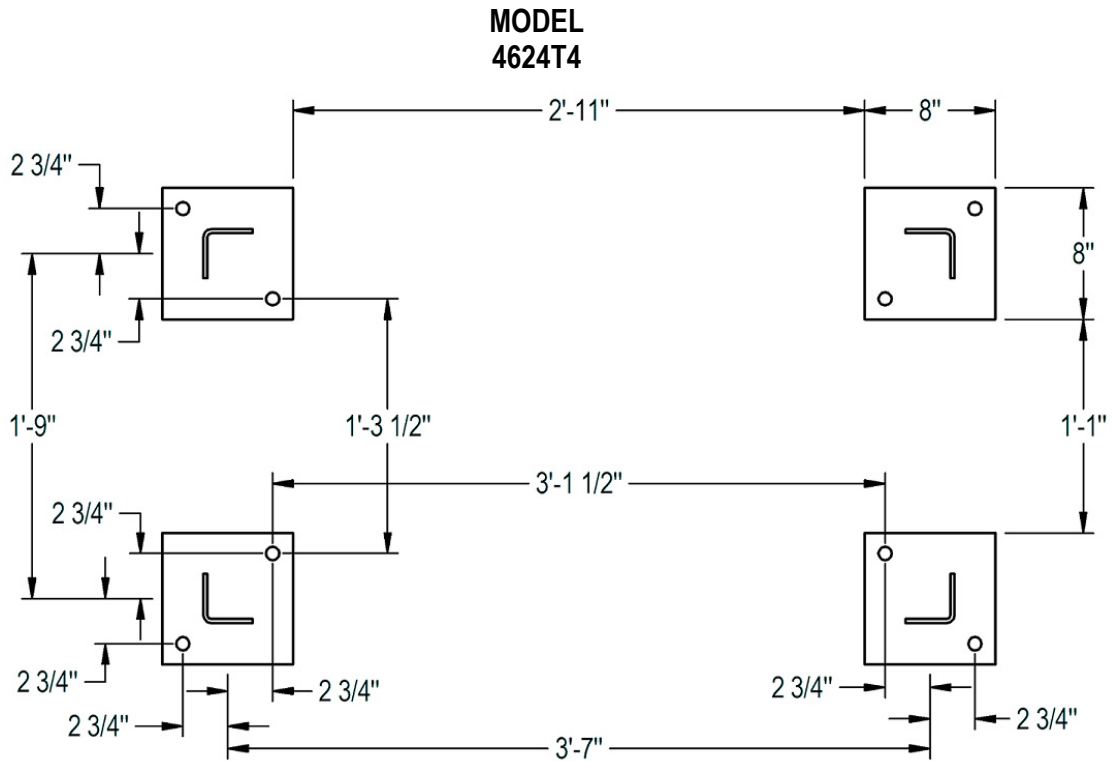
INSTALLATION

LIFTING

Use of a two-way cable spreader on one end of tower is recommended for hoisting from a horizontal position up to a standing position on assembled units up to 60' long. For units 65' or longer, it is recommended that a second two-way spreader be connected to a point on the tower that is 3/4 of the units overall length away from the end that is labeled as the top. The entire unit should then be hoisted into the air using two cranes or a crane with a two cable system, then turned to an upright position in mid-air.

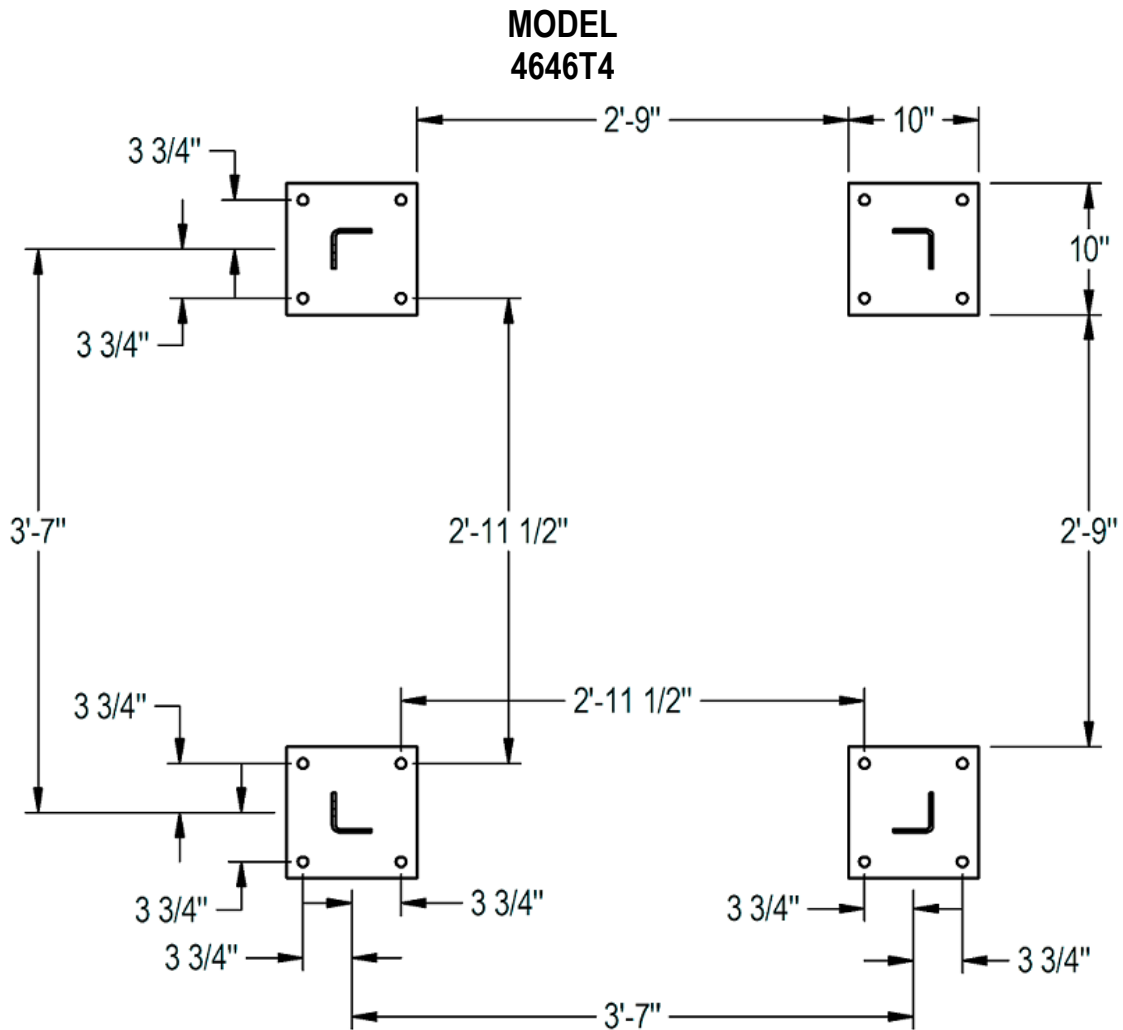
ANCHORING: 4624T4

The 4624T4 tower will need to be anchored to a properly engineered concrete foundation. Reference the diagrams below for dimensional locations of the (8) eight 3/4" anchor bolts.



ANCHORING: 4646T4

The 4646T4 tower will need to be anchored to a properly engineered concrete foundation. Reference the diagrams below for dimensional locations of the (16) sixteen 3/4" anchor bolts.



WARRANTY

The full extent of the warranty supplied by Honeyville Metal, Inc. is to correct any defects in material and/or workmanship on the products manufactured only by Honeyville Metal, Inc. Any unauthorized modifications to the equipment voids this warranty. This warranty period extends for **one year** from the date the product arrives on the site where installation will take place. Honeyville Metal, Inc. retains the right to review and/or adjust the time period for those products that may be held in inventory at a dealer's warehouse. Honeyville Metal, Inc. retains the final authority on determining if a product is within the warranty period and if full replacement of that product is required to retain the integrity of our products reputation and meet the customer's expectations. Honeyville Metal, Inc. will not furnish labor for replacement of any defective product or components of a product. Any product that is determined defective by both Honeyville Metal, Inc. and the end user who purchased the product may not be returned to Honeyville Metal, Inc. without the receipt of Return Authorization. Returned products must be shipped to Honeyville Metal, Inc. prepaid unless instructed otherwise and must be clearly marked with a Return Merchandise Authorization (RMA) number that needs to be obtained prior to the return shipment. This warranty supplied by Honeyville Metal, Inc. excludes damage to products while in transit to the destination on all public forms of transportation except the trucking equipment owned and operated by Honeyville Metal, Inc. This warranty does not cover performance guarantees on products, only defects in material and/or workmanship as prior statement. Honeyville Metal, Inc. does honor vendor warranties that extend beyond the one year period and will pass warranty coverage on to the purchaser of that vendor product.

CERTIFICATE OF QUALITY

Every effort has been made to make this equipment the best value you can obtain for your money. All the components have been inspected and assembled. The complete system has been tested to insure proper operation. We sincerely hope this equipment and our efforts meet with your approval. The full extent of Honeyville Metal, Inc. warranty is to correct any defects in material or workmanship in those products manufactured by Honeyville Metal, Inc. Motors and drives, and all electrical and air control parts carry a one-year warranty.